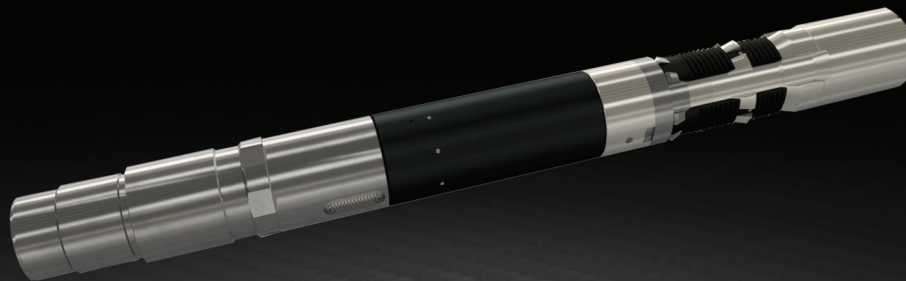




# CEMENTABLE MORPHANCHOR™

CEMENTABLE PRODUCTION ANCHOR

U.S. Patent No. 11,111,737



FILL THE GAP BETWEEN VALUE AND PERFORMANCE



# FILL THE GAP BETWEEN VALUE AND PERFORMANCE

Morphpackers deliver revolutionary and highly innovative expandable steel packers specializing in refrac packers and production packers and anchors for the global oil and gas sector.



Expandable steel  
annular packers.



Lowest price to  
performance ratio for refrac  
completion solutions.



Reducing well construction costs.  
Optimizing production.  
Enhancing life of field.



# CEMENTABLE MORPHANCHOR™

CEMENTABLE PRODUCTION ANCHOR

U.S. Patent No. 11,111,737



## ABOUT

Cementable MorphAnchor™ is a hydraulic production anchor that offers a Slim high-clearance OD design and a Big Bore ID deployed on a drillpipe conveyed running tool.

## FEATURES

- Big Bore ID design matching drift up to 4" 11.6#
- Slim OD for high RIH clearance
- Short length
- Anti pre-set
- Easily millable
- Temperature rating 325°F

## BENEFITS

- Allows use of standard plug and perf technology
- Big Bore – high pump rates
- Slim OD – easy to deploy

## APPLICATIONS

- Deploying cemented cased hole completions
- Frac and Refrac tubing anchor

# DIMENSIONS

DIMENSIONS	CASING WEIGHT	TUBING SIZE	ANCHOR OD	ANCHOR DRIFT ID
5.500"	20-23#	4.000"	4.420"	3.303"
Other sizes and specifications are available				



**Morphpackers**  
2203 Timberloch Place, Suite 100  
The Woodlands, TX 77380

+1 281 296 1679  
[info@morphpackers.com](mailto:info@morphpackers.com)  
[www.morphpackers.com](http://www.morphpackers.com)