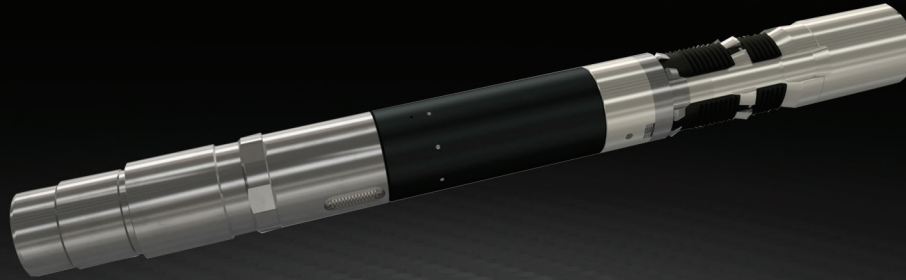




CEMENTABLE MORPHANCHOR™

CEMENTABLE PRODUCTION ANCHOR



FILL THE GAP BETWEEN VALUE AND PERFORMANCE



MORHPACKERS™

FILL THE GAP BETWEEN VALUE AND PERFORMANCE

Morphpackers deliver revolutionary and highly innovative expandable steel packers specializing in refrac packers and production packers and anchors for the global oil and gas sector.



Expandable steel
annular packers.



Lowest price to
performance ratio for refrac
completion solutions.



Reducing well construction costs.
Optimizing production.
Enhancing life of field.



CEMENTABLE MORPHANCHOR™

CEMENTABLE PRODUCTION ANCHOR



ABOUT

Cementable MorphAnchor™ is a hydraulic production anchor that offers a Slim high-clearance OD design and a Big Bore ID deployed on a drillpipe conveyed running tool.

FEATURES

- Big Bore ID design matching drift up to 4" 11.6#
- Slim OD for high RIH clearance
- Short length
- Anti pre-set
- Easily millable
- Temperature rating 325°F

BENEFITS

- Allows use of standard plug and perf technology
- Big Bore – high pump rates
- Slim OD – easy to deploy

APPLICATIONS

- Deploying cemented cased hole completions
- Frac and Refrac tubing anchor

DIMENSIONS

DIMENSIONS	CASING WEIGHT	TUBING SIZE	ANCHOR OD	ANCHOR DRIFT ID
5.500"	20-23#	4.000"	4.420"	3.303"
Other sizes and specifications are available				



Morphpackers
2203 Timberloch Place, Suite 100
The Woodlands, TX 77380

+1 281 296 1679
info@morphpackers.com
www.morphpackers.com